



Mid-Plains Center
for Behavioral Healthcare Services, Inc.

ANNUAL REPORT FY2018

CRISIS STABILIZATION UNIT

1009

CLIENTS ASSESSED

4.6

AVERAGE LENGTH OF
STAY (DAYS)

72%

UTILIZATION RATE
GOAL: 65%

73%

SUCCESSFULLY
DISCHARGED

BED DAYS USED

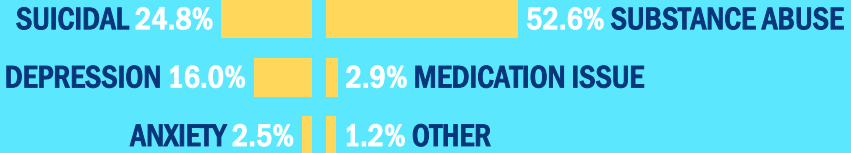
1710

SUBSTANCE ABUSE BEDS

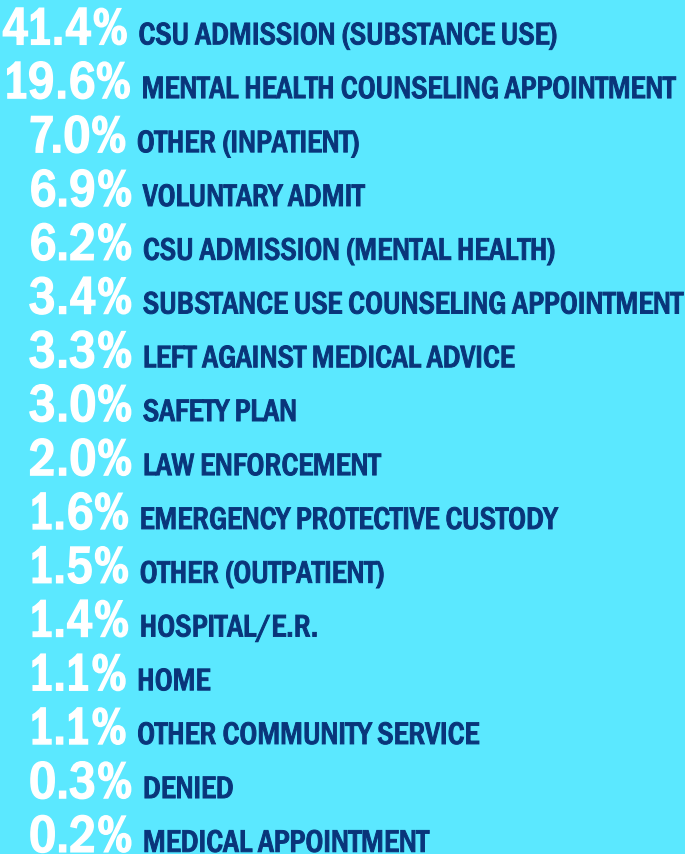
1397

MENTAL HEALTH BEDS

ISSUE AT CONTACT

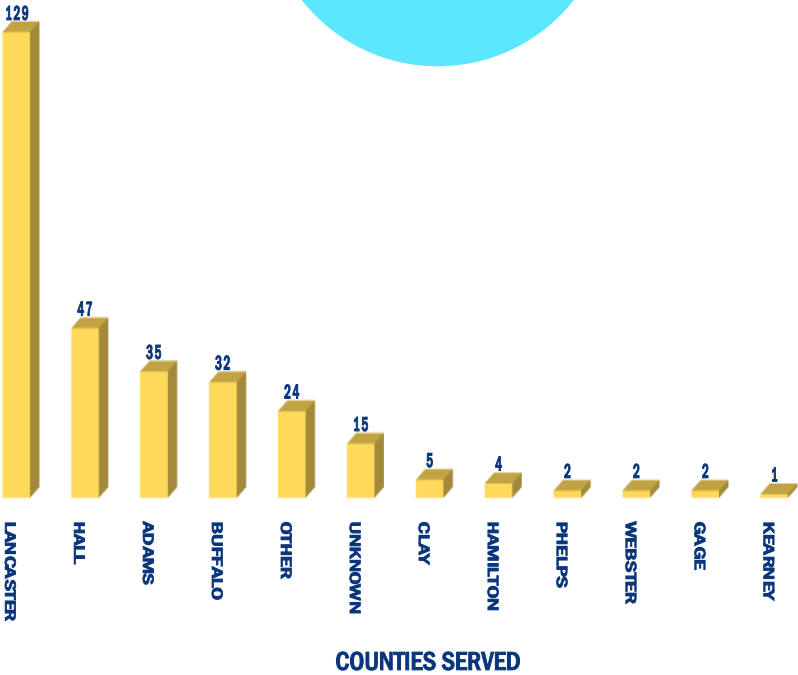
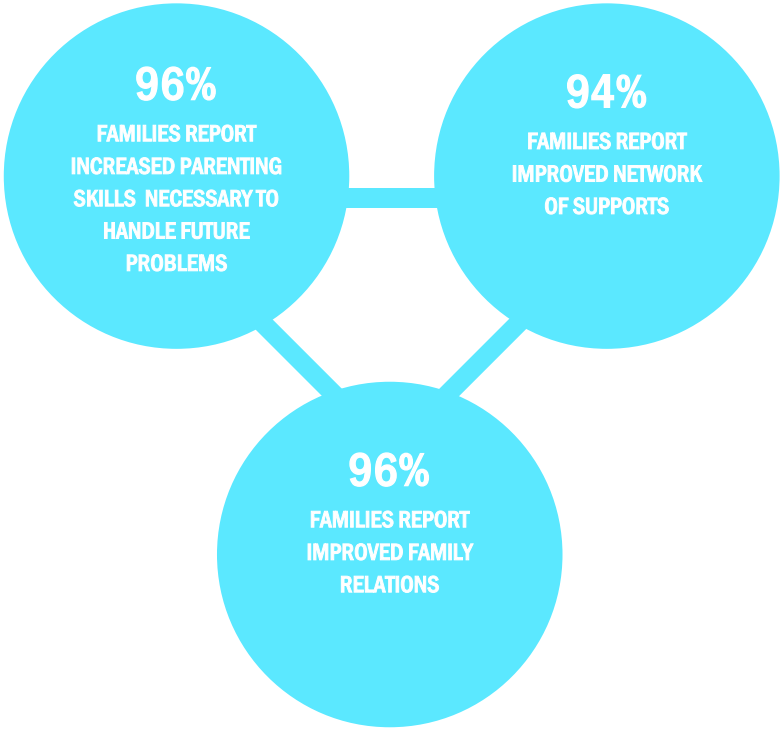


RISK ASSESSMENT OUTCOME

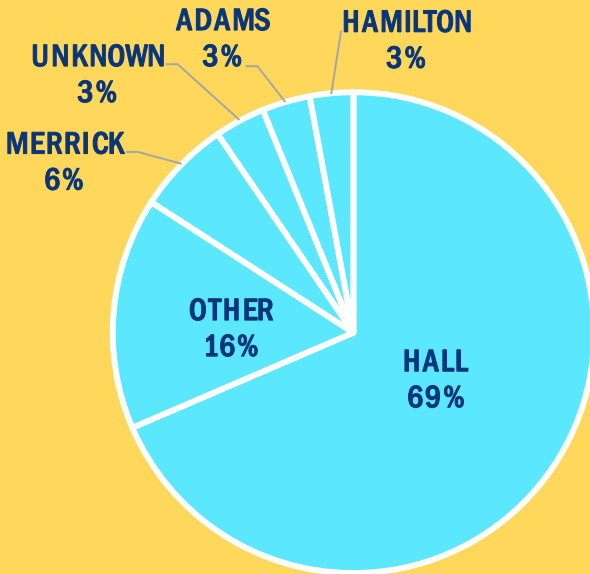
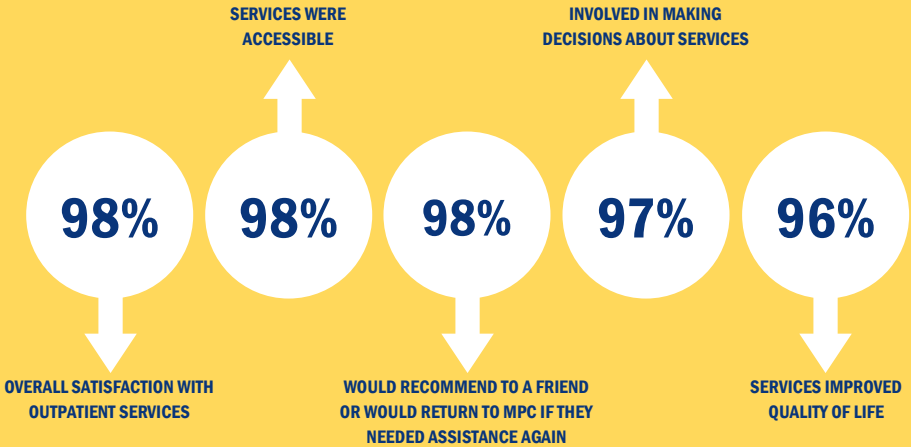


MULTISYSTEMIC THERAPY





OUTPATIENT SERVICES



COUNTY OF RESIDENCE

CLIENTS SERVED BY PROGRAM

2440

ADULT MEDICATION MANAGEMENT

1225

ADULT MENTAL HEALTH

302

CHILD MENTAL HEALTH

43

PROBLEM SEXUAL BEHAVIOR

14

CHILD MEDICATION MANAGEMENT

ADULT PROBATION GROUPS

PRE-TREATMENT GROUPS

79

SESSIONS
CONDUCTED

226

CLIENTS
ATTENDED

ANGER MANAGEMENT GROUPS

21

SESSIONS
CONDUCTED

82

CLIENTS
ATTENDED

WOMEN'S DIALECTICAL BEHAVIOR THERAPY GROUPS

85

**SESSIONS
CONDUCTED**

324

**CLIENTS
ATTENDED**

33

**SCREENINGS
PERFORMED**

MEN'S DIALECTICAL BEHAVIOR THERAPY GROUPS

89

**SESSIONS
CONDUCTED**

448

**CLIENTS
ATTENDED**

41

**SCREENINGS
PERFORMED**

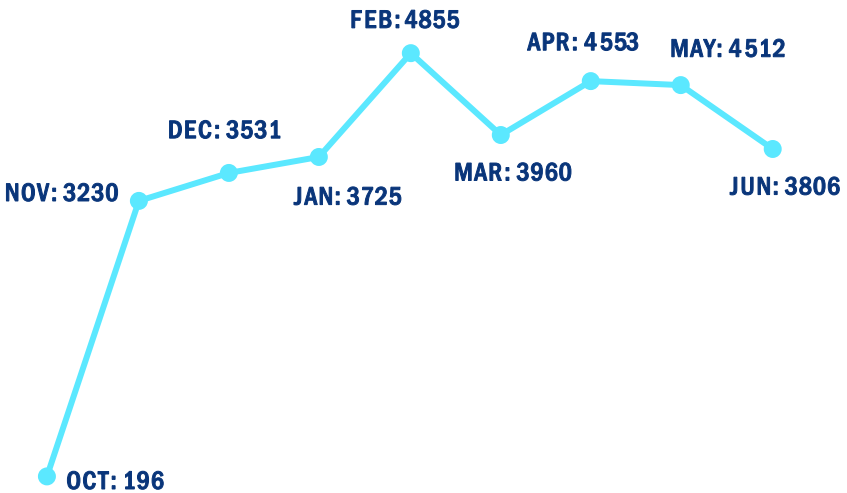
DISTRICT 9 & 10 YOUTH TRANSPORTATION

291
TRANSPORTS
COMPLETED



32,368
LOADED MILES
DRIVEN

MILES DRIVEN BY MONTH



ABOUT MID-PLAINS CENTER

Mid-Plains Center for Behavioral Healthcare Services, Inc. (MPC) is a non-profit, COA accredited, behavioral health organization. For nearly 50 years, Central Nebraskans have turned to Mid-Plains Center for low-cost behavioral health services. Established in 1971 as Mid Nebraska's Community Mental Health Center, Mid-Plains Center has expanded in the last 10 years to include a full range of services including prevention, treatment, crisis intervention and evidenced based practices.

VISION STATEMENT

Mid-Plains Center will be seen as a leader in the development of high quality, innovative, and cost-effective behavioral healthcare services. Services will be designed to meet the needs of the community, based on input received from clients, stakeholders, and our most valuable resources, our employees.

VALUE STATEMENT & GUIDING PRINCIPLES

Mid-Plains Center embraces the guiding principles of investing for results and outcomes, changing attitudes, building partnerships, committing to quality and working on a common goal to assure that there will be access to individualized treatment and recovery. We will do this by treating people with respect and dignity, through services that emphasize hope and optimism, are family and consumer-centered, are strength and recovery-based, are culturally competent and culturally affirmative. Community values are embraced, consumer involvement is expected, self-determination is respected and support services are designed to meet the needs of the individual. We value a competent workforce and endorse both promising and evidence-based practices in the service delivery system.

WWW.MIDPLAINSCENTER.ORG